

**VMD / VMR**



Within its wide range of vertical agitators, INOXMIM has designed the VMD and VMR agitators to satisfy agitating and homogenisation requirements in medium volume vessels (2000-15,000 litres).

VMD and VMR agitators are fitted with a lip sealing system which, along with the bolstering tower and semi-shaft transmission, provide high agitating performance and capacity and also extend the working life of the unit. Their characteristics mean a wide variety of impeller elements can be used, working with high viscosity products which tend to form lumps or which are difficult to mix.

These units are capable of carrying out a wide range of operations including dilution, dissolving, reagent mixes, product maintenance, etc. For these reasons, these agitators are extensively used in water treatment and in the food, chemical, pharmaceutical and cosmetic industries.

Some examples of applications which can be carried out are as follows:

- Dissolving of sugar (in milk, wine, juices, etc.), cocoa powder, reagents, salt in water, calcium hydroxide, etc.
- Dilution of pigments, additives, colorants, etc.
- Preparation of sodium hypochlorite/calcium, thickeners, adhesives, syrups, gels, creams, distilled drinks.
- Asphalt emulsion
- Slicing fruit and vegetables
- Mixing and maintaining acidic, basic or corrosive products.

## Vertical agitators



### CHARACTERISTICS

DIN 2576 PN10 Anchor flange  
Tower for bearings  
Lip seal  
Semi-shaft  
Level of finish: Industrial / Foodstuff / Sanitary

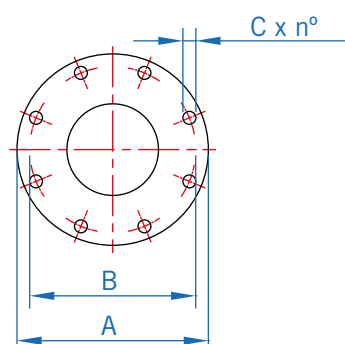
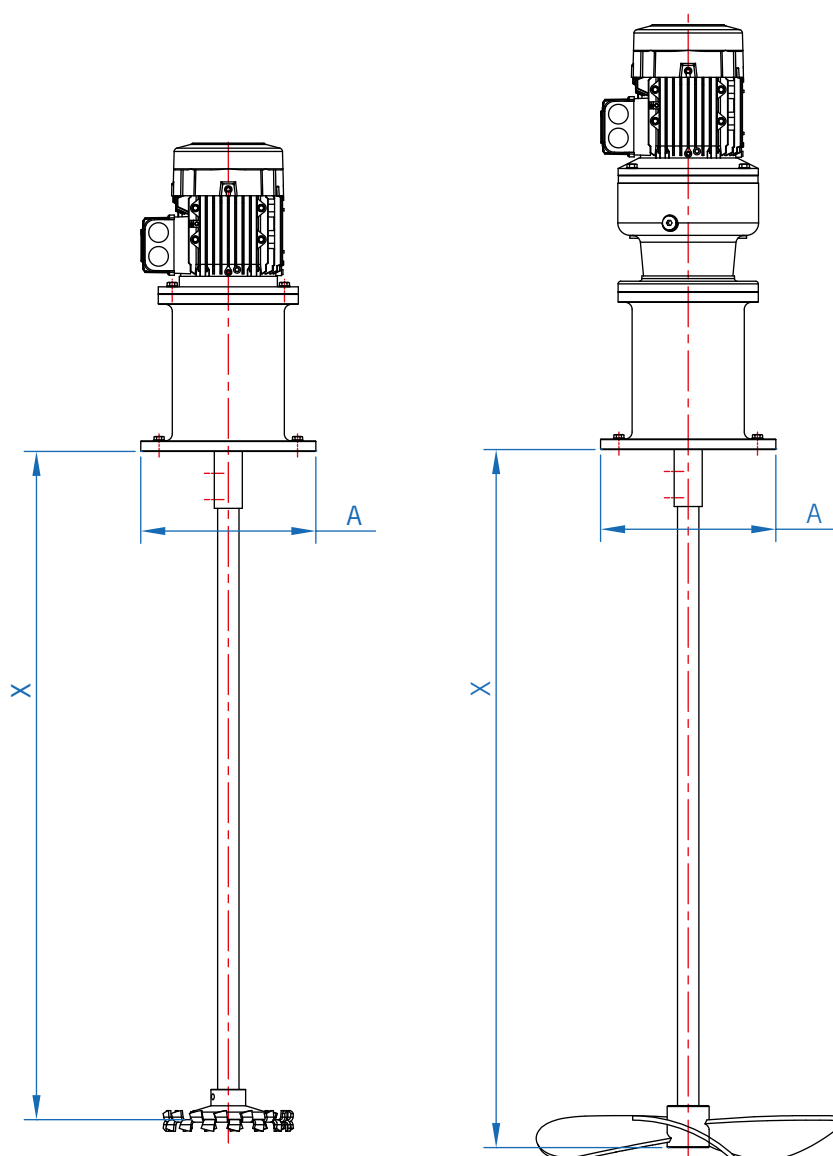
### MATERIALS

Shaft/propeller material stainless steel AISI 316  
Aluminium tower

### OPTIONS

Control panel  
Anchor flange: square, IEC type  
Other materials: AISI 304L  
V-ring sealing  
Mechanical or frequency variator  
Propeller/shaft cover (PP, PE, PVC, resins, etc.)  
Lip seal with splash safety  
Stabiliser ring  
Stainless steel casing

## DIMENSIONS OF THE VMD / VMR MODEL



### FLANGE AGITATOR BASE

OVERALL DIMENSIONS				
FLANGE	A	B	C	n°
<b>DN125</b>	250	210	16	4x90°
<b>DN200</b>	340	295	18	8x45°
<b>DN250</b>	395	350	22	12x30°